



# Larson & Darby Group - Retail

2009 AIA Northern Illinois Chapter Outstanding Firm of the Year



Colonial Cafe - St. Charles, IL

For almost 50 years, LDG's retail design team has provided architectural and engineering solutions to major retailers like GAP, OfficeMax, Old Navy, Barnes & Noble, TJ Maxx, and Woodman's along with many developers across the Midwest and the U.S. Our retail experts have a proven track record of creating cost effective design solutions and high quality construction documents. Whether it's repositioning or demising an existing space or designing a new retail development, Larson & Darby Group has the experience and expertise to deliver exceptional design and award winning service on your next retail project.

## Retail Services:

- Master/Site Planning
- Zoning/Permitting
- Architecture
- Structural Engineering
- MEP Engineering
- Design-Build or Bid
- Tenant Build-Out
- Landlord White Box
- Demising & Repositioning Existing Spaces
- Construction Administration
- Fast Track



Colonial Cafe - Dining



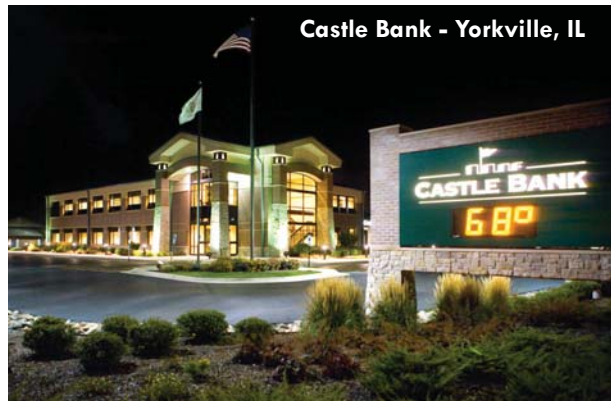
**Larson & Darby Group**  
Architects Engineers Interiors



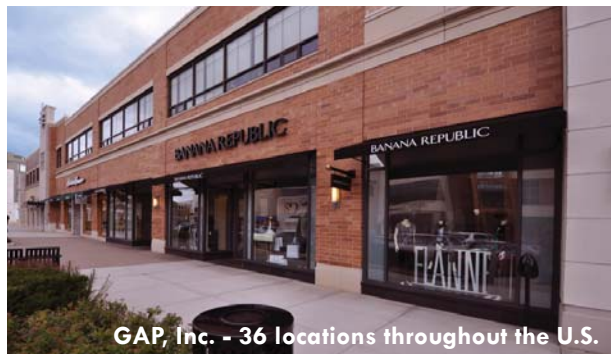
Gateway Mall - Machesney Park, IL



OfficeMax - 59 locations throughout the U.S.



Castle Bank - Yorkville, IL



GAP, Inc. - 36 locations throughout the U.S.



Woodman's Food Markets - 11 Midwest locations

### Larson & Darby Group Offices:

#### Rockford

4949 Harrison Avenue, Suite 100  
Rockford, Illinois 61108  
p: 815.484.0739  
f: 815.229.9867

#### Peoria

124 SW Adams Street, Suite 450  
Peoria, Illinois 61602  
p: 309.673.3100  
f: 309.673.3420

#### St. Charles

2019 Dean Street, 2nd Floor  
St. Charles, Illinois 60174  
p: 630.444.2112  
f: 630.444.2116

